

## Components & Test Preparation

It is important that the candidate does not have anything in their mouth (food, drink, gum, etc) 10 minutes prior to collection. Give unopened collection swab to candidate. Instruct candidate to remove plastic wrap from collection swab and begin pooling saliva in their mouth.

### Test Device



### Collection Swab

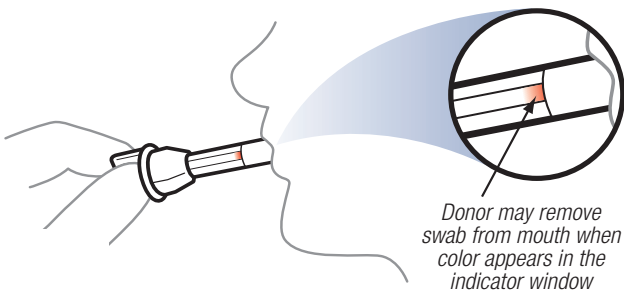


- Locking Handle
- Indicator Window
- Saturation Indicator Strip
- Sponge

# 1

## Specimen Collection

Instruct donor to introduce collection swab into mouth and actively swab the inside the mouth, top of tongue, and between cheek and gum. Hold swab in closed mouth until color on the saturation indicator strip appears in the indicator window of the collection swab or until 4 minutes has passed.



# 2

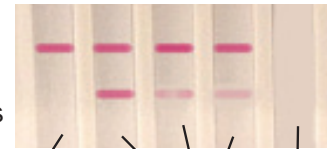
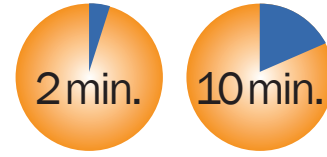
## Test Activation

With the test device positioned upright on a FLAT SURFACE (test device remains in this position until results are interpreted), instruct candidate to remove the collection swab from their mouth. Insert the swab sponge-first into screening device, pushing and turning the swab until the threaded handle locks into the top of the device.

# 3

## Test Interpretation

Negative results can be read at 2 minutes. Inconclusive results can be read at 10 minutes. Interpret test as negative, inconclusive, or invalid. Do not read test results after 15 minutes. After results are interpreted, discard device in regular trash receptacle.



## Test Valid

The control line is the uppermost line appearing in each test area, labeled "Test Valid". Before reading the test result lines, verify that all Test Valid lines have formed. Otherwise, the test is invalid and the test results must not be used.

### Negative

A **NEGATIVE** result is indicated by a reddish-purple control line and a second reddish-purple line appearing beneath for any particular drug. The intensity of the test lines may vary. Any line, without regard to intensity, color or size, is a line and indicates a negative result for that drug.

### Inconclusive (also referred to as Non-negative)

An **INCONCLUSIVE** result is indicated by a reddish-purple control line with no second line appearing for any particular drug.

**ALC**  
alcohol  
>.02% b.a.c.

**AMP**  
amphetamine  
50 ng/ml

**BAR**  
barbiturates  
50 ng/ml

**BUP**  
buprenorphine  
5 ng/ml

**BZO**  
benzodiazepines  
10 ng/ml

**COC**  
cocaine  
20 ng/ml

**COT**  
cotinine  
50 ng/ml

**EDDP**  
methadone  
metabolite  
20 ng/ml

**KET**  
ketamine  
50 ng/ml

**MET**  
methamphetamine  
50 ng/ml

**MTD**  
methadone  
30 ng/ml

**OPI**  
opiates  
40 ng/ml

**OXY**  
oxycodone  
20 ng/ml

**PCP**  
phencyclidine  
10 ng/ml

**PPX**  
propoxyphene  
50 ng/ml

**THC**  
marijuana  
50 ng/ml  
(parent compound)