



**GotchaDwi.com**

**Lt. Allan Marx**

479-629-4986

amarx@premierbiotech.com

P.O. Box 180074

Fort Smith, AR 72918

# ORALTOX™ PROCEDURE GUIDE

## Components & Test Preparation

It is important that the candidate does not have anything in their mouth (food, drink, gum, etc) 10 minutes prior to collection. Give unopened collection swab to candidate. Instruct candidate to remove plastic wrap from collection swab and begin pooling saliva in their mouth.

### Test Device



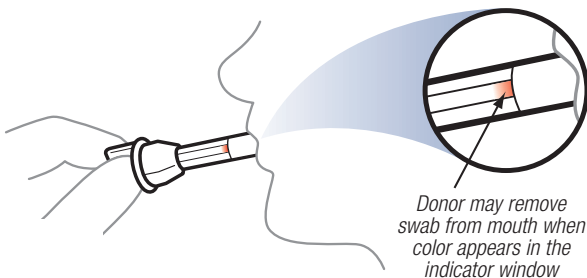
### Collection Swab



# 1

## Specimen Collection

Instruct donor to introduce collection swab into mouth and actively swab the inside the mouth, top of tongue, and between cheek and gum. Hold swab in closed mouth until color on the saturation indicator strip appears in the indicator window of the collection swab or until 4 minutes has passed.



# 2

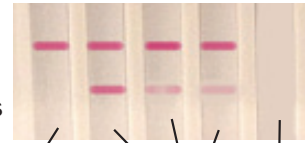
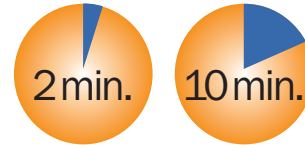
## Test Activation

With the test device positioned upright on a FLAT SURFACE (test device remains in this position until results are interpreted), instruct candidate to remove the collection swab from their mouth. Insert the swab sponge-first into screening device, pushing and turning the swab until the threaded handle locks into the top of the device.

# 3

## Test Interpretation

Negative results can be read at 2 minutes. Inconclusive results can be read at 10 minutes. Interpret test as negative, inconclusive, or invalid. Do not read test results after 15 minutes. After results are interpreted, discard device in regular trash receptacle.



Inconclusive Negative Invalid



## Test Valid

The control line is the uppermost line appearing in each test area, labeled "Test Valid". Before reading the test result lines, verify that all Test Valid lines have formed. Otherwise, the test is invalid and the test results must not be used.

### Negative

A **NEGATIVE** result is indicated by a reddish-purple control line and a second reddish-purple line appearing beneath for any particular drug. The intensity of the test lines may vary. Any line, without regard to intensity, color or size, is a line and indicates a negative result for that drug.

### Inconclusive (also referred to as Non-negative)

An **INCONCLUSIVE** result is indicated by a reddish-purple control line with no second line appearing for any particular drug.

<b>ALC</b>	alcohol
>.02% b.a.c.	
<b>AMP</b>	amphetamine
50 ng/ml	
<b>BAR</b>	barbiturates
50 ng/ml	
<b>BUP</b>	buprenorphine
5 ng/ml	
<b>BZO</b>	benzodiazepines
10 ng/ml	
<b>COC</b>	cocaine
20 ng/ml	
<b>COT</b>	cotinine
50 ng/ml	
<b>EDDP</b>	methadone metabolite
20 ng/ml	
<b>KET</b>	ketamine
50 ng/ml	
<b>MET</b>	methamphetamine
50 ng/ml	
<b>MTD</b>	methadone
30 ng/ml	
<b>OPI</b>	opiates
40 ng/ml	
<b>OXY</b>	oxycodone
20 ng/ml	
<b>PCP</b>	phencyclidine
10 ng/ml	
<b>PPX</b>	propoxyphene
50 ng/ml	
<b>THC</b>	marijuana
50 ng/ml	
(parent compound)	